

Micro Control Systems

APPLICATION NOTE

APP-081

How to Wire McQuay Chiller Oil Level Sensors

Revision History

Date	Author	Description
12/28/12	Jeff Thelen	Created application note

Levelite Optical Oil Level Switch:

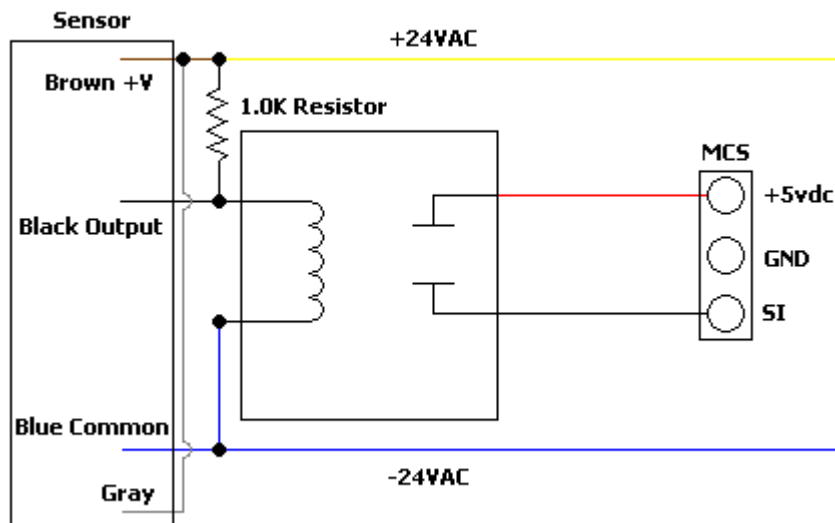
GLL100501F:



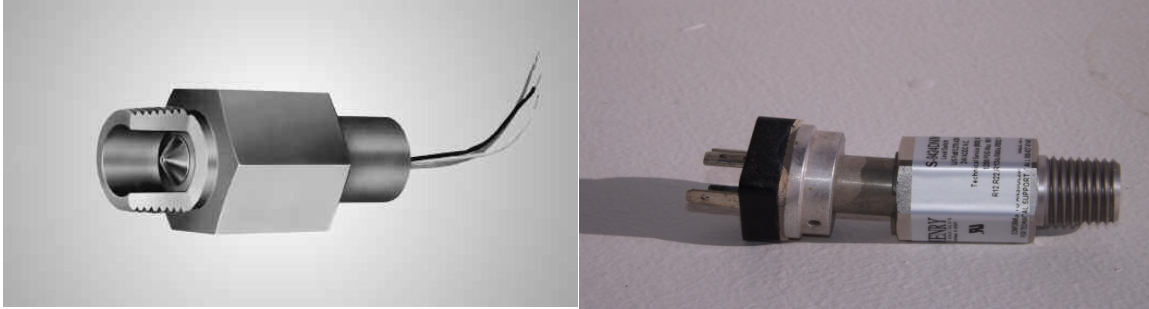
GLL100504A:



- 1: To wire these switches, you'll need to have a relay and a 1k resistor.
- 2: Attach the brown wire to the hot leg of the 24vac transformer.
- 3: Place the 1k resistor between the brown and black wires and attach the black wire to one side of the relay coil.
- 4: Attach the blue wire to the other side of the relay coil, as well as the common side of the 24vac transformer.
- 5: Attach the Magnum +5vdc and SI sensor input across the Normally Open contacts of the relay.
- 6: Attach the Gray wire to the hot leg of the 24vac transformer.



Henry S-9400 Series Level Switch:



- 1: To wire this, you'll need a relay.
- 2: Attach terminal #1 of the sensor to the hot leg of the 24vac transformer, and to one side of the relay coil.
- 3: Attach terminal #2 of the sensor to the common leg of the 24vac transformer.
- 4: Attach terminal #3 of the sensor to the remaining side of the relay coil.
- 5: Attach the Magnum +5vdc and SI sensor input across the Normally Open contacts of the relay.

